

AEROSOUND[®]



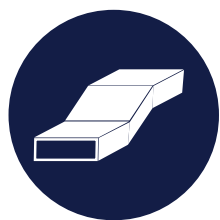
INSTALLATION GUIDE

 www.aerofoamvietnam.com

Index

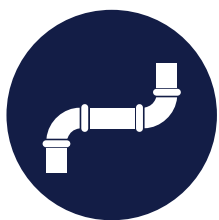
Suggested tool list	2
Storage and handling	2
AeroSound® Acoustic Duct Liner	
<hr/>	
A. Installation with self-adhesive option	4
B. Installation without self-adhesive option	5
AeroSound® Sound Lagging Material	
<hr/>	
A. Insulation of drainage pipes	7
B. Insulation of walls	8
AeroSound® Acoustic Floor Underlay	
<hr/>	
A. Installation below and under screed	10-11
B. Installation below carpets	12-13
AeroSound® Gym Flooring	
<hr/>	
A. HIIT Roll	15-16
B. Puzzle	17
C. Dynamic & Dynamic +	18

Suggested Tool List



Duct Liners & Sound Absorbers

- Sharp knife
- Standard measuring tape
- Optional: brush or spatula
- Optional: adhesive
- Marker pen



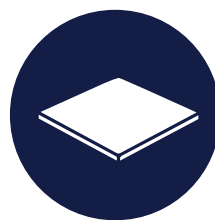
Sound Lagging Pipes

- Sharp knife
- Standard measuring tape
- Brush or spatula
- Adhesive
- Tape
- Fitting templates
- Marker pen
- Optional: wire or cable tie



Sound Barrier Walls

- Sharp knife
- Standard measuring tape
- Acoustic tape
- Double-sided tape
- Tape
- Acrylic sealant
- Marker pen



Floor Underlay

- Sharp knife
- Standard measuring tape
- Tape
- Perimetric tape
- PE foil (for RSF only)
- Optional: adhesive
- Marker pen
- Notched trowel



Gym Flooring

- Sharp knife
- Standard measuring tape
- Pins
- Rubber mallet
- Glue (industrial, one-component moisture-cured polyurethane adhesive)
- Broom or vacuum
- Roller
- Thinner (Recommended by glue manufacturer)
- Marker pen
- Notched trowel

Note: Brushes and spatula must be chemically resistant to the type of used adhesive.

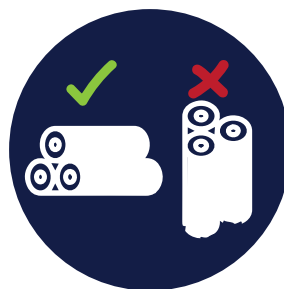
Storage & Handling



Deliver to the job site in its original, unopened packaging with all labels intact.



Carefully unload the material to avoid damages. Dropping, throwing or dragging the material on the ground can result in damages of outer layers and edges.



Store horizontally on the ground to avoid damaging the edges.



Store indoor in a clean, dry and smooth surface, away from direct sunlight at 0-35 °C.



Keep the material in its original packaging until cutting/installation takes place to ensure all surfaces remain clean and free from dust/moisture.



Inspect for visual defects before the installation. No labor claim will be honored on material installed with visual defects. Any discrepancies must be reported immediately before beginning installation.



Do not expose to any source of flame or intense heat.

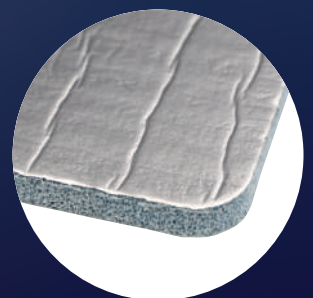
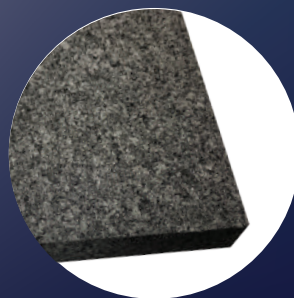
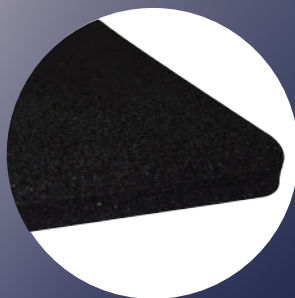


Can be stored for 24 months (12 months with pressure sensitive adhesive) from the manufacturing date in a clean, dry, dust-free room at normal humidity and ambient temperature.



AEROSOUND[®]

Acoustic Duct Liners



Installation Guidelines for AeroSound® Duct Liners with Self-adhesive

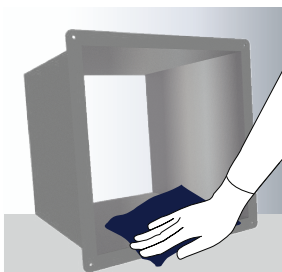
Below installation procedure is applicable for models with self-adhesive option:

- AeroSound® LX
- AeroSound® LXF
- AeroSound® LN
- AeroSound® ESA

During the installation process, it is necessary to use recommended accessories and tools. (Refer to page 2)

1. Surface Preparation

The surface of the duct must be clean and free of any loose particles and any other debris such as rust and fibers. The prepared surface should be free from oil, grease and water. Prepare the surface by thoroughly cleaning it using general purpose thinner or acetone. Follow the safety guidelines provided by the manufacturer of thinner/acetone.



2. Measurement/Diameters

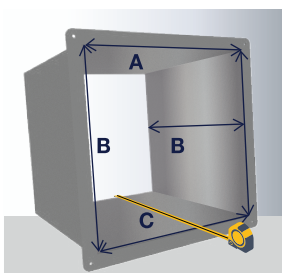
Use the measuring tape inside the duct to indicate below dimensions of 3 parts of the liner while adding 5 mm for compressed fit:

A. Top - from side to side

B. Sides - from top to the bottom

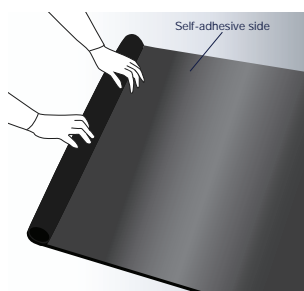
C. Bottom - from side to side considering insulation thickness on the side and depth of the duct

Above procedure is applicable for straight ducts, elbows, t-parts and reducers.



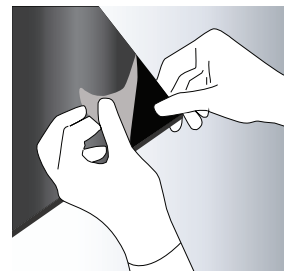
3. Cutting Procedure

Unpack the selected AeroSound® Duct Liner and place it on a flat and clean surface, with self-adhesive side up. Transfer the measurement into the sheet and mark the cutting lines. Cut the material precisely while using recommended accessories.



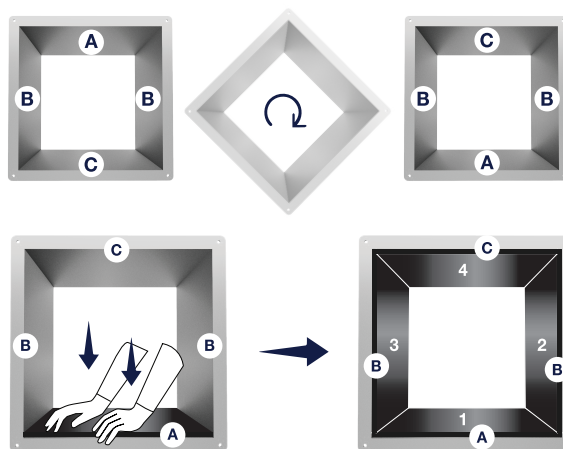
4. Application of Duct Liner with Self-adhesive into straight duct

Remove the release paper/foil and stick the foam to the desired duct surface along and edge or corner, following the order of each part (top, sides and bottom). **As the applied adhesive is pressure sensitive (PSA), make sure that the liner is evenly pressed without trapping any air.**

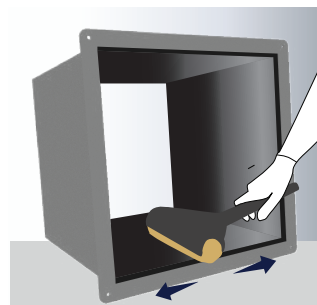


It is recommended to install the duct liner parts to the inner bottom surface of the duct for easier pressure application. Please follow below order:

1. Install top side **(A)** on the bottom, then rotate the duct 90°.
2. Install the side **(B)** and rotate the duct 180° to install another side **(B)** and then rotate 90°.
3. Install the bottom **(C)**.



Installation is complete once all the adjoining edges are installed under compressed fit (it is recommended to use hand roller for better pressure distribution). No visible signs of gaps or voids should be present.



Note: In case it is necessary to apply duct liner into fittings, fabricate templates for all the fittings and transfer the pieces by tracing the metal fitting onto a piece of cardboard, then transfer the pattern to the AeroSound® Duct Liner sheet. Cut out with a sharp knife and adhere the AeroSound® Duct Liner onto the filling piece.

Installation Guidelines for AeroSound® Duct Liners without Self-adhesive

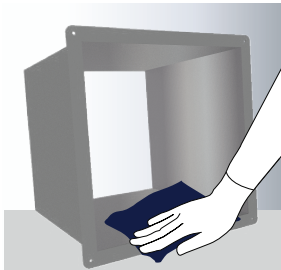
Below installation procedure is applicable for models without self-adhesive:

- AeroSound® LX
- AeroSound® LXF
- AeroSound® LN
- AeroSound® ESA

During the installation process, it is necessary to use recommended accessories and tools. (Refer to page 2)

1. Surface Preparation

The surface of the duct must be clean and free of any loose particles and any other debris such as rust and fibers. The prepared surface should be free from oil, grease and water. Prepare the surface by thoroughly cleaning it using general purpose thinner or acetone.



2. Measurement/Diameters

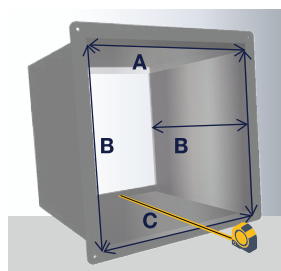
Use the measuring tape inside the duct to indicate below dimensions of 3 parts of the liner while adding 5 mm for compressed fit:

A. Top - from side to side

B. Sides - from top to the bottom

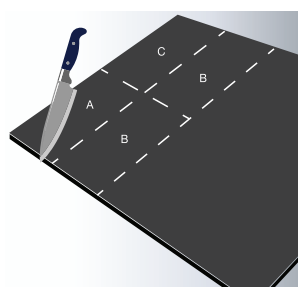
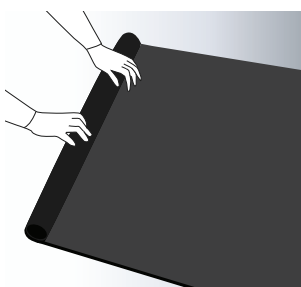
C. Bottom - from side to side considering insulation thickness on the side and depth of the duct

Above procedure is applicable for straight ducts, elbows, t-parts and reducers.



3. Cutting Procedure

Unpack the selected AeroSound® Duct Liner and place it on a flat and clean surface. Transfer the measurement into the sheet and mark the cutting lines. Cut the material precisely while using recommended accessories.



4. Application of Glue

Use recommended accessories and glue to proceed with installation. Apply the glue using brush/spatula evenly to the cut pieces of the foam. After short drying (finger test), stick the foam to the desired duct surface along an edge or corner following the order of each part (top, sides and bottom). Make sure that the liner is evenly pressed without trapping any air.

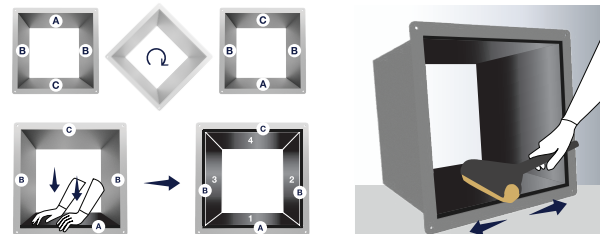
Note: Before proceeding with above, always refer to the installation instruction and safety precautions indicated by glue manufacturer.



It is recommended to install the duct liner parts to the inner bottom surface of the duct for easier pressure application. Please follow below order:

1. Install top side **(A)** on the bottom, then rotate the duct 90°.
2. Install the side **(B)** and rotate the duct 180° to install another side **(B)** and then rotate 90°.
3. Install the bottom **(C)**.

Installation is complete once all the adjoining edges are installed under compressed fit (it is recommended to use hand roller for better pressure distribution). No visible signs of gaps or voids should be present.



Note: In case it is necessary to apply duct liner into fittings, fabricate templates for all the fittings and transfer the pieces by tracing the metal fitting on to a piece of cardboard, then transfer the pattern to the AeroSound® Duct Liner sheet. Cut out with a sharp knife and adhere the AeroSound® Duct Liner onto the fitting piece.

Above installation methodology is also applicable for below types of systems:

- GI ducts (rectangular & circular)
- Sound attenuators
- AHU and FCU

And as inside filler of enclosure for:

- Power generators
- Compressors
- Centrifugal fans
- Engines
- Pumps

For installation of pre-insulated ducts with aluminum foil facer (rectangular and circular) (excluding fiber glass based ducts), please contact AeroSound® Technical Support.

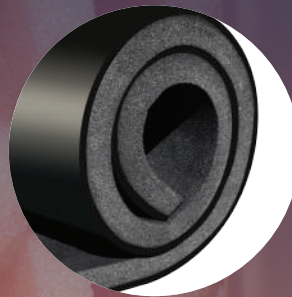
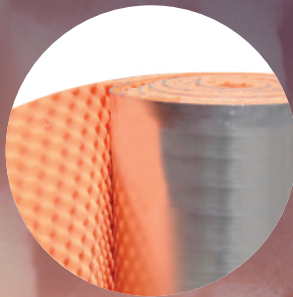
How to calculate the final noise output?

AeroSound® Acoustic Software can be used to calculate the final approximate noise level from ventilation and air conditioning duct systems, while using selected thickness of AeroSound® Duct Liners.

Visit our website:
www.aerofoamvietnam.com

Scan the QR code to download the desktop app.





AEROSOUND[®]

Sound Lagging
Material

Installation Guidelines for AeroSound® Lagging Material over the Pipe

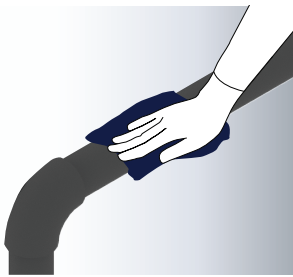
Below installation procedure is applicable for models:

- AeroSound® SLM
- AeroSound® SL+
- AeroSound® SLM/GW

During the installation process, it is necessary to use recommended accessories and tools. (Refer to page 2)

1. Surface Preparation

The pipework must be pressure checked and without leakages. The prepared surface should be free from oil, grease and water. Prepare the surface by thoroughly cleaning. The product should be clean, dry, and devoid of oil, dirt, rips and tears.



2. Measurement/Diameters

Before lagging the pipe, determine its length (L) and outer diameter (OD). Using the formula below, calculate and reduce the needed wrapping width (W) of AeroSound® Sound Lagging Material.

The formula:

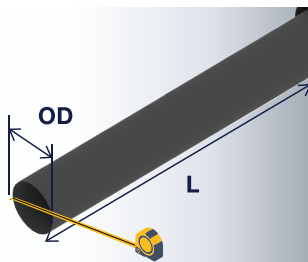
$$W = \pi \times (OD + (2 \times T)) + OL ; \text{ where}$$

OD = outside diameter of the pipe

$\pi = 3.14$

T = thickness of AeroSound® Sound Lagging Material

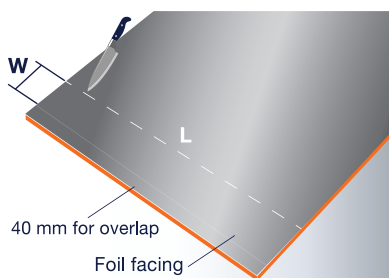
OL = overlap (40 mm)



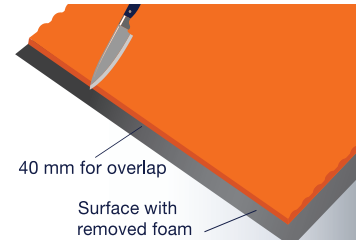
3. Cutting Procedure

Mark the predicted width (W) along the length of the roll and cut material (as illustrated in the images) with a sharp knife. AeroSound® Sound Lagging Material may be trimmed to size with a sharp knife to avoid wastage. Always cut the material from the foil-facing barrier on the side.

With a sharp knife, cut the material for the pieces where width is about 40 mm longer than the circumference of the pipe. Additional width is also needed for the overlap.



All junctions along longitudinal pipe sections must have adjacent material segments overlapped. A strip of 40 mm foam can be removed along one or both edges as needed to accommodate for an overlap at joints. (Overlapping pictures illustrate further information.) A smooth surface is created by overlapping joints and by removing the foam.

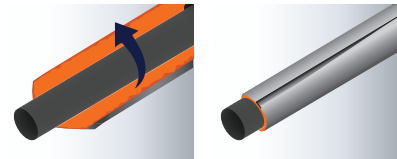


4. Optional Application of Glue recommended for vertical pipes (for AeroSound® SL+ only)

Once the material is cut into desired pieces, apply the glue using brush on the other side of the pipe and the soft side of the insulation. The area where the overlap is covering first layer has to be glued as well. After short drying (finger test), wrap the precut material around the pipe and press hard.

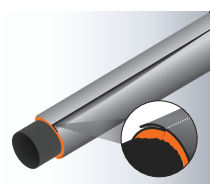
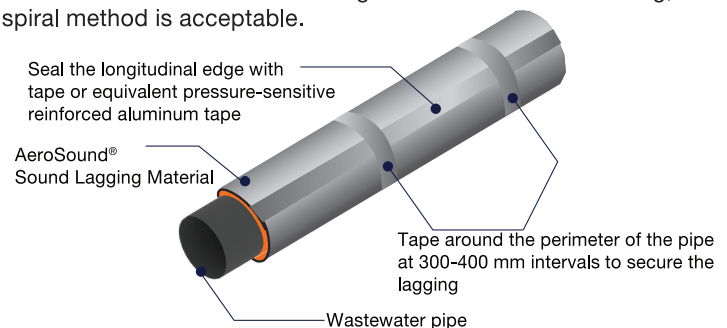
5. Application of AeroSound® Sound Lagging Material to pipe sections

Wrap the precut material around the pipe and press hard.

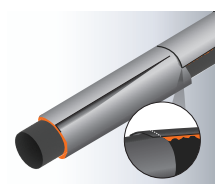


6. Installation for tape/wire/cable tie for mechanical fixing

Once the AeroSound® Sound Lagging is cut and applied over the pipe surface, remove the backing from the release lining and place the tape in the center of the pieces to be connected. Push firmly across the whole tape surface. Smooth down any air bubbles or buckles by wiping or rubbing hard pressure across the tape with a spatula. When applying the tape, do not overstretch it as this may result in buckles and voids in the contact surface. In case of using wire for mechanical fixing, spiral method is acceptable.



Longitude Overlap



Circumference Overlap

Note: Aluminum Foil Tape is intended as a connecting or covering tape for AeroSound® Acoustic Lagging.



Scan to watch installation video

Installation Guidelines for AeroSound® Lagging Material on Acoustic Wall Partition

Below installation procedure is applicable for models:

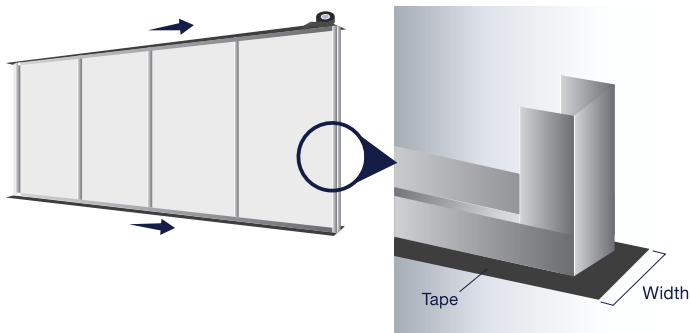
- AeroSound® SLM
- AeroSound® SL+
- AeroSound® SLM/GW
- AeroSound® HD/HDM

During the installation process, it is necessary to use recommended accessories and tools. (Refer to page 2)

1. Surface Preparation

A. Metal framed wall should be prepared as per manufacturers recommendation before starting the process of application of acoustic insulation, considering that the distance from vertical profiles should be reduced from 60 to 40 cm.

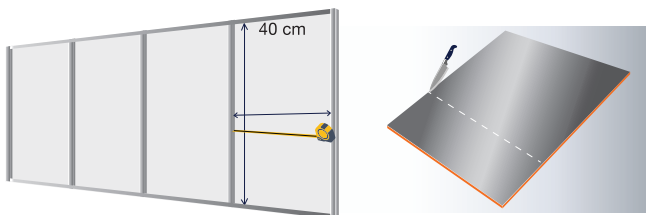
B. Metal structure should be installed on Acoustic Tape especially on the bottom and top of U-steel profile. Please note that width of the tape should correspond with width of the profile plus two times added thickness of plaster board and two times thickness of sound barrier. (Refer to pic below)



2. Material Preparation

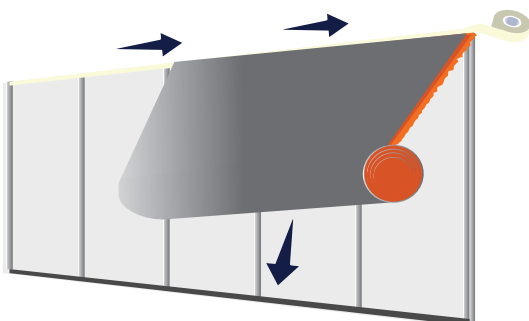
A. Take the material out of the original packaging.

B. Measure the surface area where the material should be applied on the metal frame and cut the material accordingly.

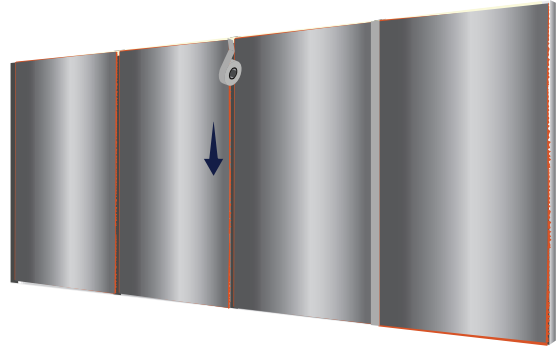


3. Material Application

A. Apply double-sided tape on the top of the metal frame and paste the material as a temporary fixing and unroll the material towards the floor.



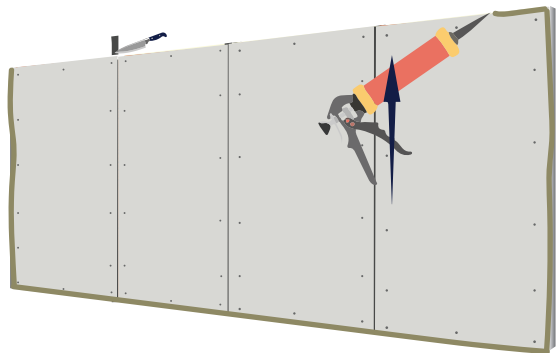
B. Cover the joints of AeroSound® material with tape to fill the gaps and to keep continuity of the acoustic barrier.



C. Cover the frame with gypsum board from both sides with metal screws. Make sure that gypsum board is supported with acoustic tape from the bottom and does not come in contact with concrete slab directly.



D. Once the wall is closed with gypsum board, cut out the excess of the acoustic tape and use the acrylic sealant to fill all gaps from top, bottom and sides.



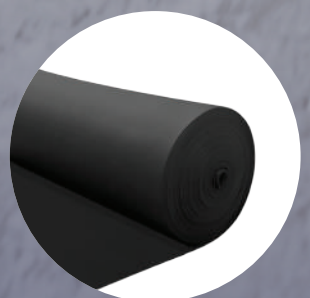
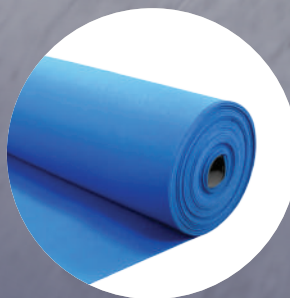
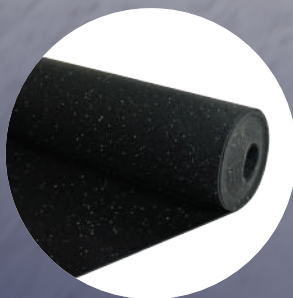
E. Proceed with wall finishing works as usual.

Note: Above represents basic type of application for new partitions. For further details of different wall configurations, please contact Technical Support. In case of improving existing walls, new structure with AeroSound® layer should be installed independently from the existing one for the maximum acoustic results.



AEROSOUND[®]

Floor Underlay



Installation Guidelines for AeroSound[®] Floor Underlay Below & Under Screed

Below installation procedure is applicable for models:

- AeroSound[®] SF
- AeroSound[®] ESF
- AeroSound[®] RSF

During the installation process, it is necessary to use recommended accessories and tools. (Refer to page 2)

Preparation of Installation Area



1. Before beginning the installation, all areas to be applied with AeroSound[®] Floor Underlay should be weather tight and have a constant temperature before, during and after installation.



2. Subfloor should be smooth and free of defects, cracks or moving joints to prevent transmission to flooring.



3. All concrete, masonry framing membranes, drywall paint or other wet works should be thoroughly cured and dry.



4. The base floor must be clean (free from loose dirt and concrete dust), flat and where possible, dry.

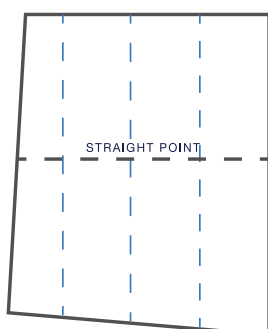


5. Any type of floor drain, piping conduit and duct penetrations should be covered properly.

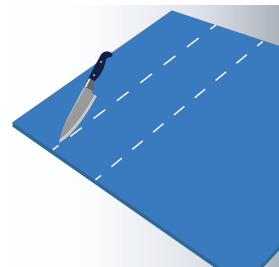
Installation

1. Remove the AeroSound[®] Floor Underlay from the shrink-wrap and unroll it onto the floor. Lay the flooring on the floor in a way that will use your cuts efficiently.

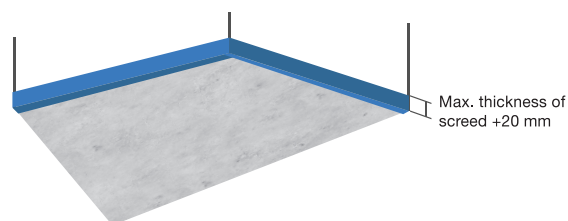
Using a chalk line, make a line perpendicular to the longest wall in the room and establish a straight point of reference for the installation of the AeroSound[®] Floor Underlay.



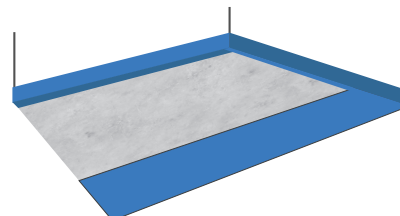
2. In case perimetric tape is not available, cut all rolls at the required length, including perimeter strips for the wall.



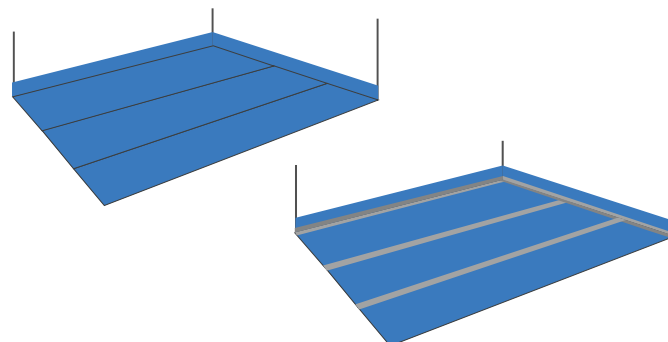
3. The perimeter strips must be installed first on the perimeter of the walls, columns and stairs. These strips can either be cut to the required width on site using a sharp knife and straight edge or pre-cut strips can be ordered individually. The perimeter strips should be at least 20mm above the finished screed. Excess material to be trimmed after the screed has set.



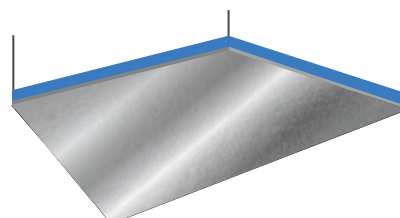
4. Place the AeroSound[®] Floor Underlay along the snap line, cut the adjacent piece, trim it and lay adjacent to the first piece.



5. Tape all seams with AeroSound[®] Tape or overlap at least 20 mm to avoid the leakage of screed during casting. Make sure that there is no direct contact between screed and concrete slab.

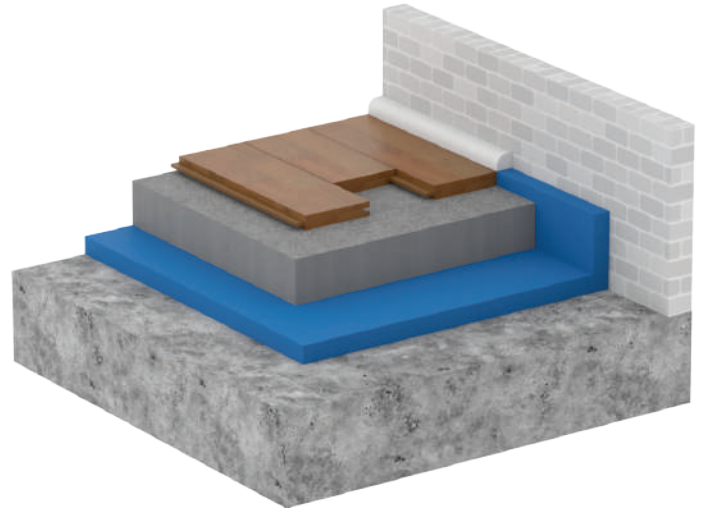


6. Lay a water proof membrane (foil) over the entire area. Applicable for AeroSound[®] RSF only.

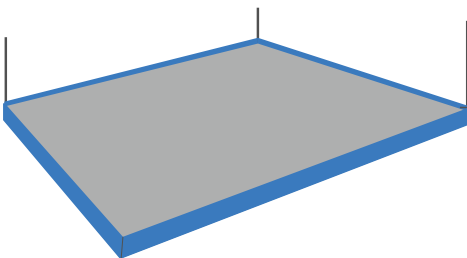
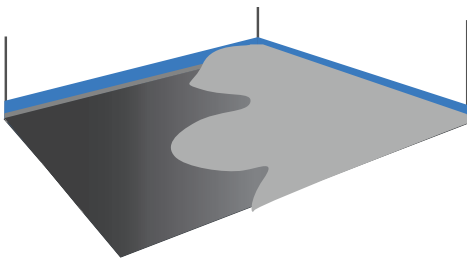


Installation Guidelines for AeroSound® Floor Underlay Below & Under Screed

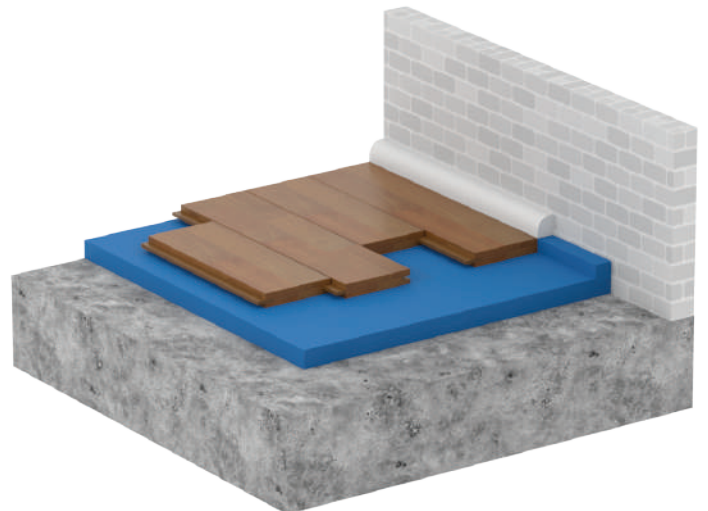
7. Care is to be taken to ensure the topping screed does not come in direct contact with adjoining walls as this will affect the floating slab acoustic noise isolation concept.



8. Once all above mentioned points are completed, proceed with application of screed or other selected type of flooring.



20 mm extra above finished screed



Note: For all flooring types, follow the manufacturers installation instructions. Use their recommended material. Do not use mechanical fasteners through the AeroSound® Floor Underlay as this might effect the noise transmission.

Scan to watch
installation video



Installation Guidelines for AeroSound[®] Floor Underlay Below Carpets

Below installation procedure is applicable for models:

- AeroSound[®] SF
- AeroSound[®] ESF
- AeroSound[®] RSF

During the installation process, it is necessary to use recommended accessories and tools. (Refer to page 2)

Preparation of Installation Area



1. Before beginning the installation, all areas to be applied with AeroSound[®] Floor Underlay should be weather tight and have a constant temperature before, during and after installation.



2. Subfloor should be smooth and free of defects, cracks or moving joints to prevent transmission to flooring.



3. All concrete, masonry framing membranes, drywall paint or other wet works should be thoroughly cured and dry.



4. The base floor must be clean (free from loose dirt and concrete dust), flat and where possible, dry.

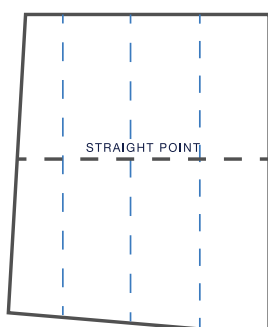


5. Any type of floor drain, piping conduit and duct penetrations should be covered properly.

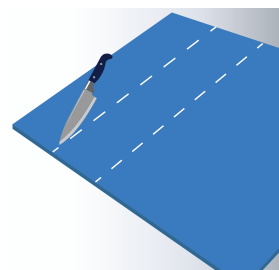
Installation

1. Remove the AeroSound[®] Floor Underlay from the shrink-wrap and unroll it onto the floor. Lay the flooring on the floor in a way that will use your cuts efficiently.

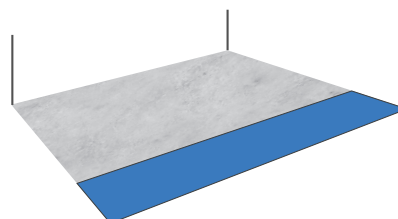
Using a chalk line, make a line perpendicular to the longest wall in the room and establish a straight point of reference for the installation of the AeroSound[®] Floor Underlay.



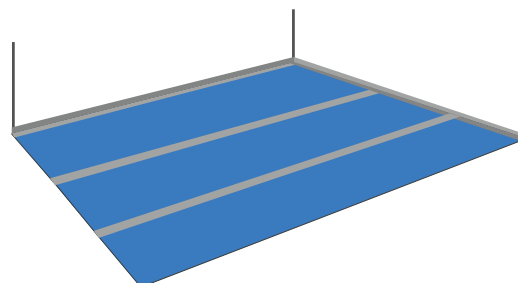
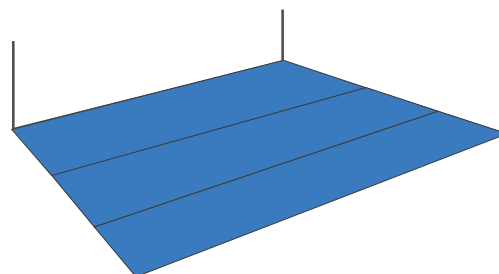
2. Cut all rolls at the required length.



3. Place the AeroSound[®] Floor Underlay along the snap line, cut the adjacent piece, trim it and lay adjacent to the first piece.



4. Tape all seams with AeroSound[®] Tape or overlap at least 20mm to avoid the noise leakage.



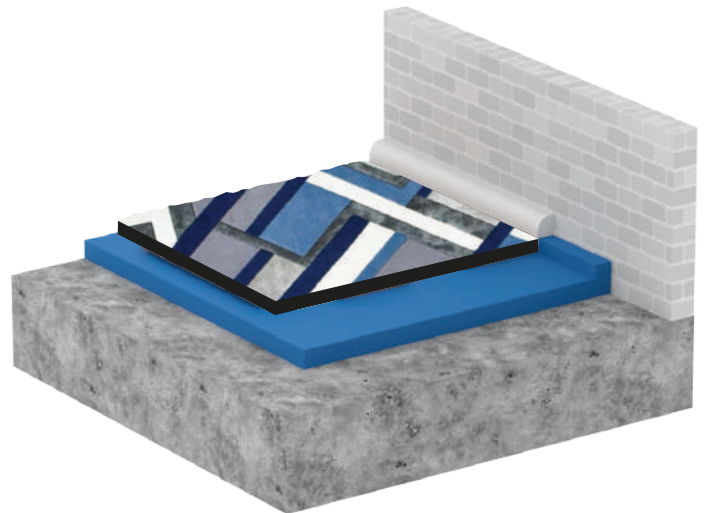
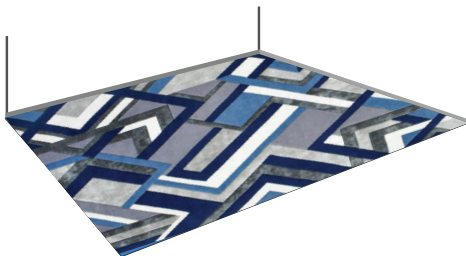
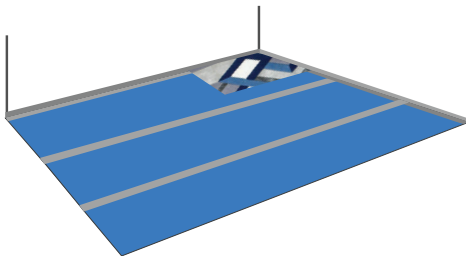
Optional carpet glue can be used to proceed with installation for better mechanical fixing. It can be used between carpet and floor underlay or/and between floor underlay and the screed. Follow instruction manual of manufacturer of adhesive during installation.

Installation Guidelines for AeroSound® Floor Underlay Below Carpets

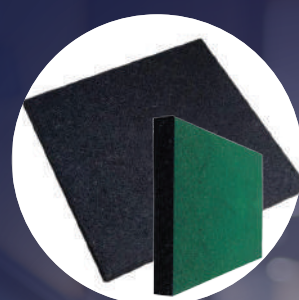
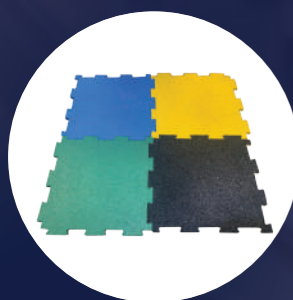
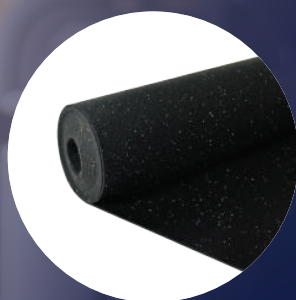
5. Care is to be taken to ensure the topping screed does not come in direct contact with adjoining walls as this will affect the floating slab acoustic noise isolation concept.



6. Once all above mentioned points are completed, proceed with application of carpet.



Note: For all flooring types; follow the manufacturers installation instructions. Use their recommended material. Do not use mechanical fasteners through the AeroSound® Floor Underlay as this might effect the noise performance of the system.



AEROSOUND[®]

Gym Flooring

Installation Guidelines for AeroSound® Gym Flooring HIIT Rolls

During the installation process, it is necessary to use recommended accessories and tools. (Refer to page 2)

Preparation of Installation Area



1. Installation should not begin until/after all other finishing processes are completed in the area.



2. Before beginning the installation, all areas to be applied with AeroSound® Gym Flooring should be weather tight and have a constant temperature before, during and after installation.



3. Subfloor should be smooth and free of defects, cracks or moving joints to prevent transmission to flooring.



4. All concrete, masonry framing membranes, drywall paint or other wet works should be thoroughly cured and dry.



5. The base floor must be clean (free from loose dirt and concrete dust), flat and where possible, dry.

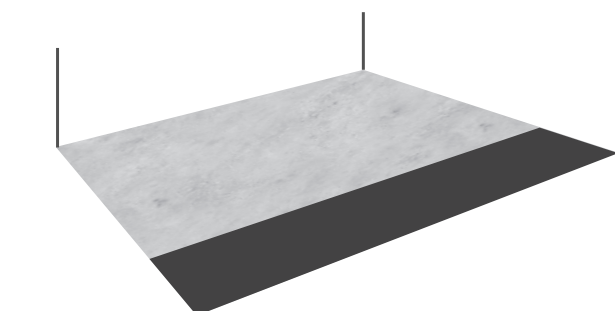
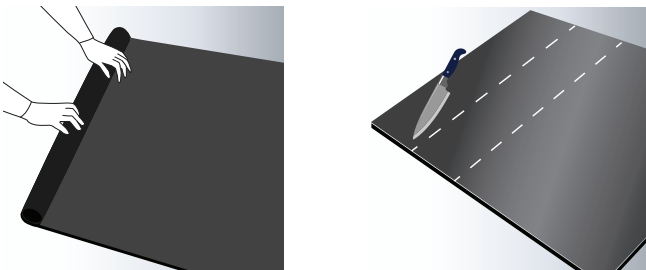


6. Mechanically remove all traces of old adhesives, paint, or other debris by scraping, sanding, or scuffing the substrate. Do not use solvents. All high spots shall be at ground level and low spots filled with patching compound.

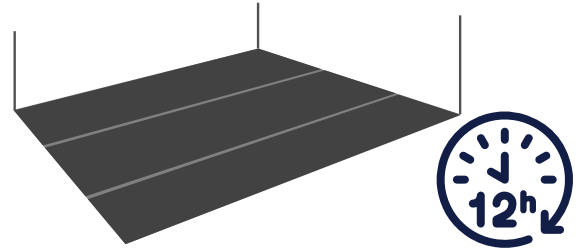
Installation - Material Preparation

1. Remove the AeroSound® Gym Flooring from the packaging and unroll it on the floor. Lay it on the selected installation area in a way that will help to cut the material efficiently.

2. Cut all rolls at the required length, in the way that material is going to cover all selected area.

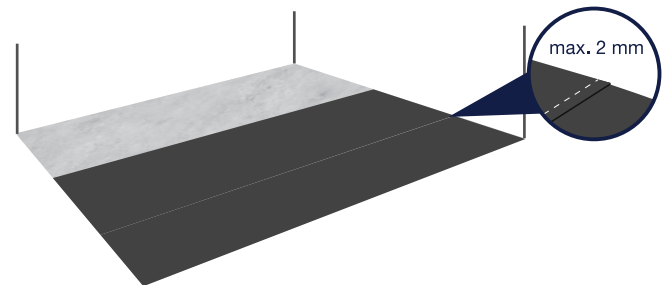


3. Leave the material that has been cut for a minimum of 12 hours (preferably for 24 hours) to allow it to relax in the desired position.

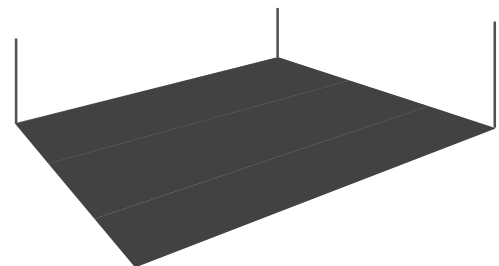


4. The edge of the first roll shall be placed along the chalk line.

5. The second roll shall be placed with no more than 2 mm overlap over the first roll at the seam to make sure that all seams are tight and all gaps are eliminated.



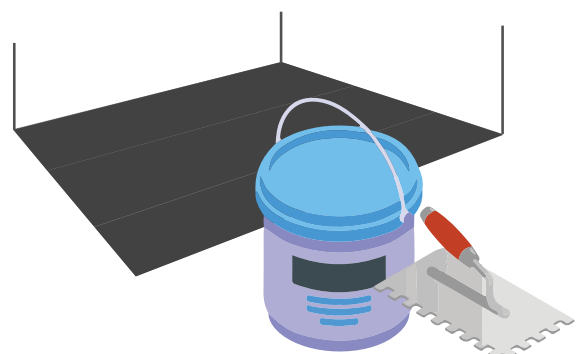
6. Repeat for each roll necessary to cover the selected area.



Installation - Glue Application

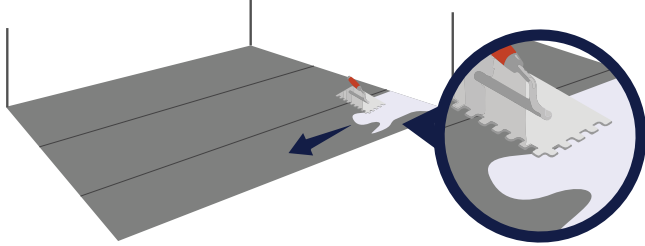
1. Once all below procedures are completed, application of glue can be started. *Glue recommendation: Industrial one-component moisture-cured polyurethane adhesive. The one-component adhesive should not be mixed. Adhesive shall be used in accordance with installation manual of adhesive's manufacturer.*

2. Apply the selected adhesive to the substrate. It is recommended to use a square notched trowel.



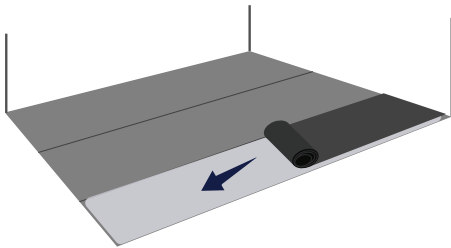
Installation Guidelines for AeroSound® Gym Flooring HIIT Rolls

3. Fold over the first drop along the wall on the place where the first drop of glue was applied.

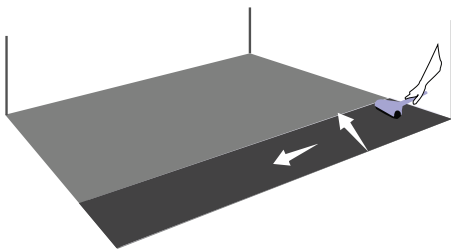


4. Spread the rest of the adhesive using square notched trowel. Be careful not to spread more adhesive than can be covered with flooring within 30 minutes. Strictly follow the glue manufacturers instructions.

5. Once the adhesive is spread on the substrate, slowly lay the flooring into the area with previously applied adhesive. Make sure that there is no air trapped under the flooring as it may cause air bubbles to appear.

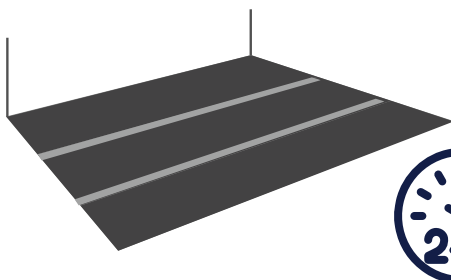


6. Immediately roll the floor (width first and then the length) with a 45 kg roller to ensure proper adhesive transfer and to be assured that no air is trapped under the flooring as it may cause air bubbles to appear.

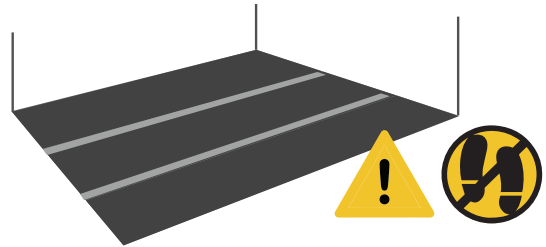


7. Continue the same process for each consecutive drop.

8. If there are some gaps between seams, temporarily hold them together with masking tape. Do not use duct tape as it may leave an unwanted mark on the floor surface. Remove the tape

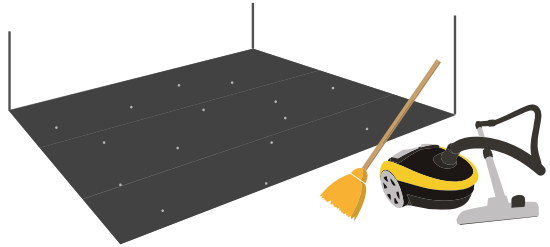


9. It is necessary to keep traffic off the floor for a minimum of 24 hours. Any foot traffic or loads can cause permanent indentations if the adhesive is not cured.



Cleaning & Maintenance

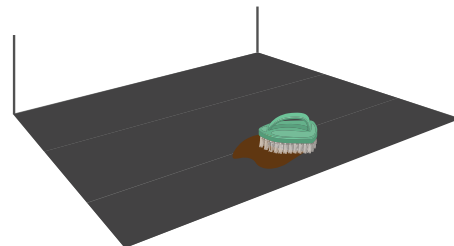
1. Remove all surface dirt and debris by use of brush or vacuuming.



2. Use the wet mop to remove dirt using a neutral pH detergent diluted (follow the manufacturers instructions).



3. For tough stains, use a nylon brush to scrub the stained area. It is recommended to use low pH detergent.



4. Rinse the floor with clean water. Any excess of water shall be removed by a wet vacuum.



Installation Guidelines for AeroSound[®] Gym Flooring Puzzle

During the installation process, it is necessary to use recommended accessories and tools. (Refer to page 2)

Preparation of Installation Area



1. Installation should not begin until/after all other finishing processes are completed in the area.



2. Before beginning the installation, all areas to be applied with AeroSound[®] Gym Flooring should be weather tight and have a constant temperature before, during and after installation.



3. Subfloor should be smooth and free of defects, cracks or moving joints to prevent transmission to flooring.



4. All concrete, masonry framing membranes, drywall paint or other wet works should be thoroughly cured and dry.



5. The base floor must be clean (free from loose dirt and concrete dust), flat and where possible, dry.

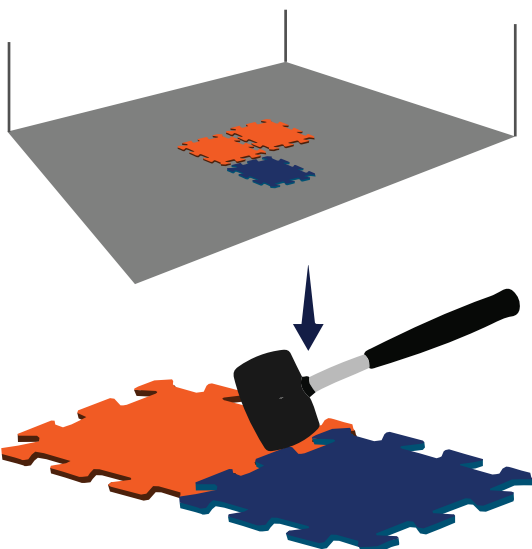


6. Mechanically remove all traces of old adhesives, paint, or other debris by scraping, sanding, or scuffing the substrate. Do not use solvents. All high spots shall be at ground level and low spots filled with patching compound.

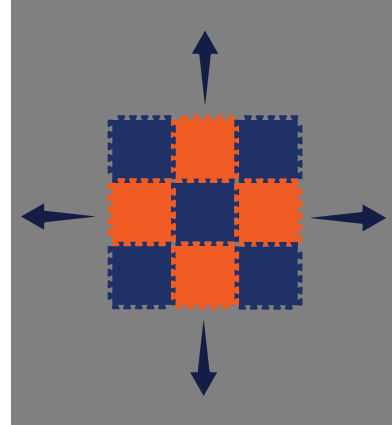
Installation - Material Preparation

1. Remove the AeroSound[®] Gym Flooring from the packaging and place it on the floor.

2. Lay down the tiles to the desired length and width and interlock the tiles. You can gently tap the tabs with a rubber mallet.



3. It is recommended to start the tile installations from the center of the room toward the walls.



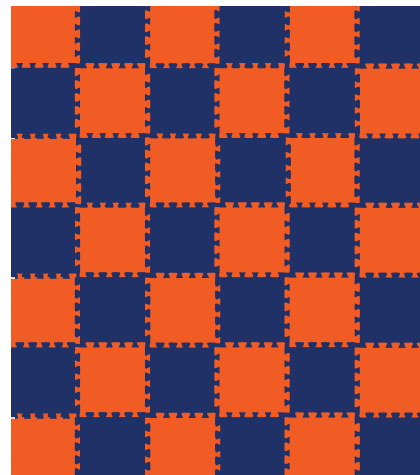
NOTE: Use pre-cut border tiles with one square edge and corner tiles with two square edges for all the borders for a better and finished look.



One square edge



Two square edge



Cleaning & Maintenance

1. Remove all surface dirt and debris by use of brush or vacuuming.

2. Use the wet mop to remove dirt using a neutral pH detergent diluted (follow the manufacturers instructions).

3. For tough stains, use a nylon brush to scrub the stained area. It is recommended to use mild detergent.

4. Rinse the floor with clean water. Any excess of water shall be removed by a wet vacuum.

Installation Guidelines for AeroSound® Gym Flooring Dynamic & Dynamic+

During the installation process, it is necessary to use recommended accessories and tools. (Refer to page 2)

Preparation of Installation Area



1. Installation should not begin until/after all other finishing processes are completed in the area.



2. Before beginning the installation, all areas to be applied with AeroSound® Gym Flooring should be weather tight and have a constant temperature before, during and after installation.



3. Subfloor should be smooth and free of defects, cracks or moving joints to prevent transmission to flooring.



4. All concrete, masonry framing membranes, drywall paint or other wet works should be thoroughly cured and dry.



5. The base floor must be clean (free from loose dirt and concrete dust), flat and where possible, dry.

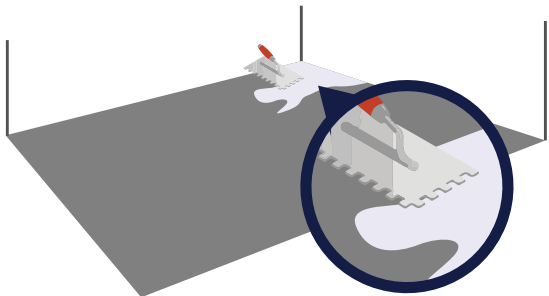


6. Mechanically remove all traces of old adhesives, paint, or other debris by scraping, sanding, or scuffing the substrate. Do not use solvents. All high spots shall be at ground level and low spots filled with patching compound.

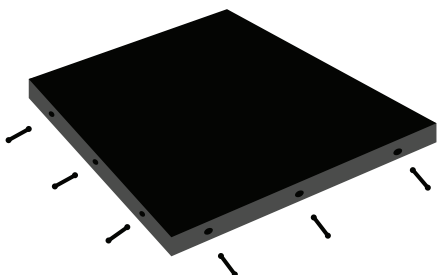
Installation - Material Preparation

1. Remove the AeroSound® Gym Flooring from the packaging and place it on the floor.

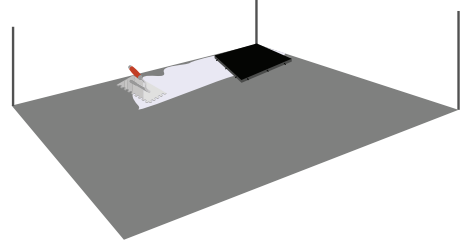
2. Apply the selected adhesive to the substrate. It is recommended to use a square notched trowel.



3. Start by inserting the connector pins into the pre-drilled slots on two adjacent sides of each tile (applicable for thicknesses from 10 mm and above). Use your hand to press the pins.



4. Once the tile is prepared as per point 3, place it in the corner of the area you intend to cover by applying the first drop of gym flooring along the wall on the place where the first drop of glue was applied.



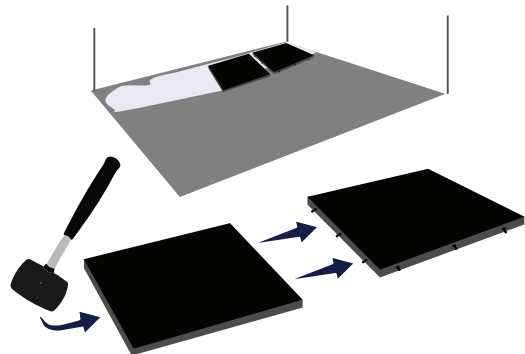
5. Spread the rest of the adhesive using square notched trowel. Be careful not to spread more adhesive than can be covered with flooring within 30 minutes. Strictly follow the glue manufacturer's instructions.

6. Repeat the same with another tile. Align the pins of the first tile with the pre-drilled slots of the second tile.

7. Slide the second tile towards the first tile so that the pins enter the slot. Place the tiles as close to the wall as possible on the area covered with glue.

8. Push the tiles together with your hands. If you face difficulties, you can use a rubber mallet.

9. Continue above steps until the entire area is covered.



10. In case, if you need to cut a tile to fit in the remaining area, use the measuring tape to measure the length of the remaining floor that needs to be covered.

11. Take the tile you will be trimming, turn it upside down, and mark the tile using chalk according to the measurement that you took earlier for the uncovered area. Follow the set indication to cut the tile.

12. Connect the trimmed pieces to the uncovered areas by using connector pins and repeat the installation as per point 2-8.

Note: It is recommended to use glue for application of all thicknesses for the maximum comfort during workout.

Cleaning & Maintenance

1. Remove all surface dirt and debris by use of brush or vacuuming.

2. Use the wet mop to remove dirt using a neutral pH detergent diluted (follow the manufacturer's instructions).

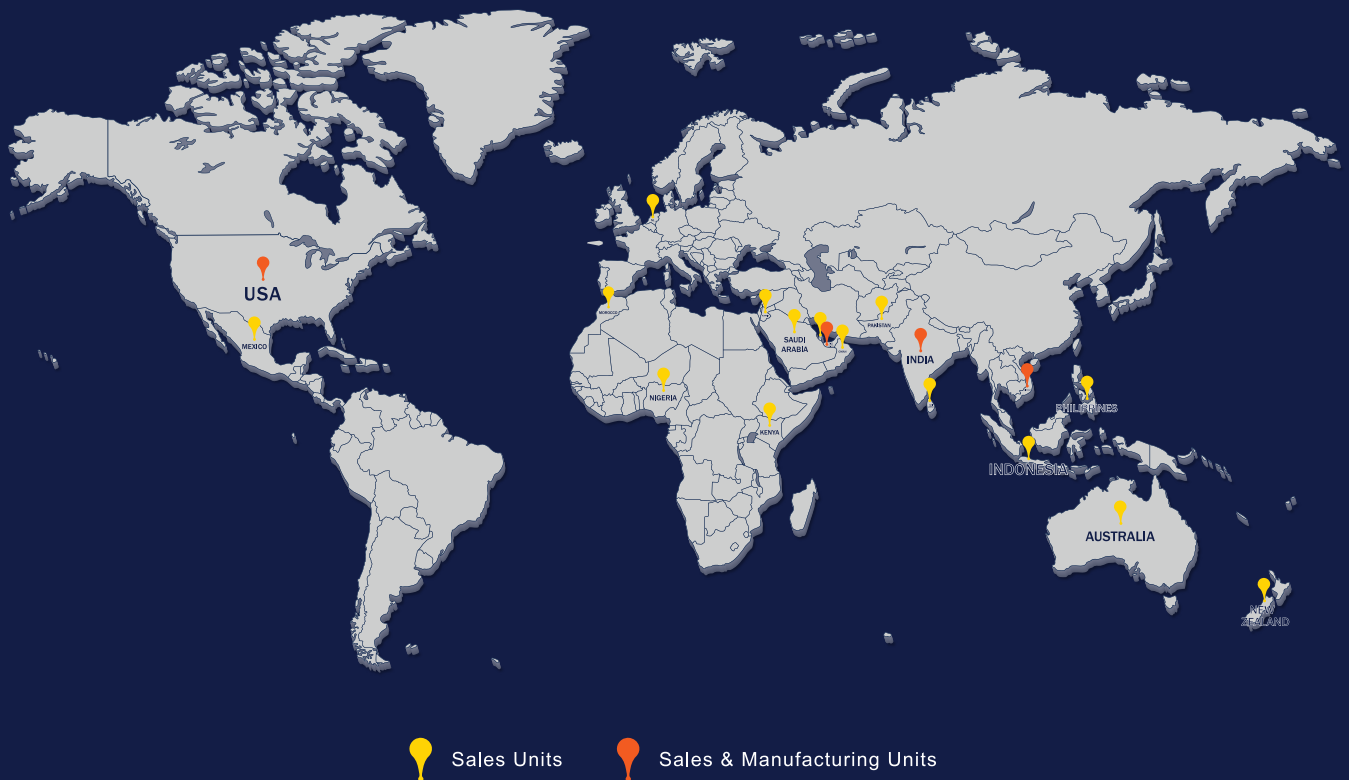
3. For tough stains, use a nylon brush to scrub the stained area. It is recommended to use mild detergent.

4. Rinse the floor with clean water. Any excess of water shall be removed by a wet vacuum.

5. If necessary, use thinner recommended by manufacturer of glue to remove excessive amount of glue from the surfaces.

AEROSOUND[®]

Global Footprint



Manufactured by: Hira Manufacturing Co. Ltd.
Factory: Lot 16, Street No. 5, Giang Dien IP,
Giang Dien Commune, Trang Bom District,
Dong Nai Province, HCMC, Vietnam

☎ +84 888 116 118
✉ enquiry@rhira.com
🌐 www.aerofoamvietnam.com
www.rhira.com

